

PWSC PHOTOS AND ROOM CAPABILITIES



PWSC, 303 Lowe Street, Valdez, Alaska
PWSC is centrally located in the city of Valdez. It borders the City of Valdez Park Strip and is within walking distance of PWSC Housing, the grocery store, museums and the library.



Room 101B, Red Room

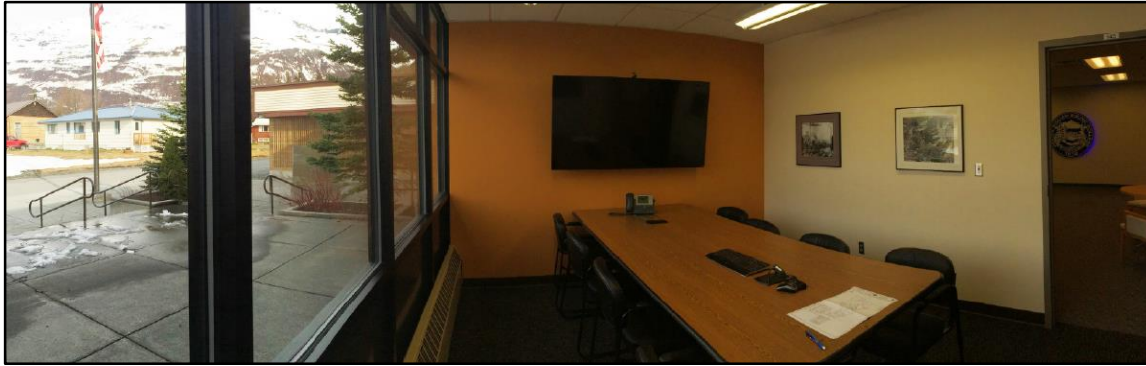
The Red Room is located off the PWSC Whitney Museum. It has a beautiful view of the surrounding mountains with room darkening blinds. A computer with Office 2016 give the user the ability to project content to a 70" TV. Meetings in this room can utilize teleconference, Skype video and public Wi-Fi.



Room 102, Suacit Hall

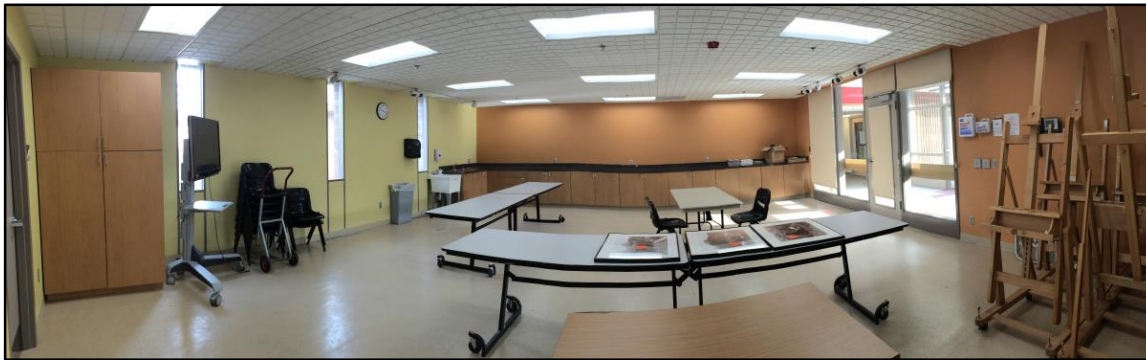
The Suacit Hall is a multi-purpose space that can be configured to meet the needs of many types of gatherings. It comes with a state of the art audio and visual media center and public Wi-Fi is also available.

PWSC PHOTOS AND ROOM CAPABILITIES



Room 143, West Boardroom

The West Boardroom has an integrated computer giving the user the ability to control the image from a seated position at the conference table. The computer, projected to a 70" TV, has Office 2016, Skype Video and public Wi-Fi access.



Room 149, Multi-Purpose Space

Room 149 can be configured in many ways to suit the user. It comes with a long counter and sink on one end of the room. A portable TV/computer unit can be used if available. It also has public Wi-Fi access.



Room 153, Classroom

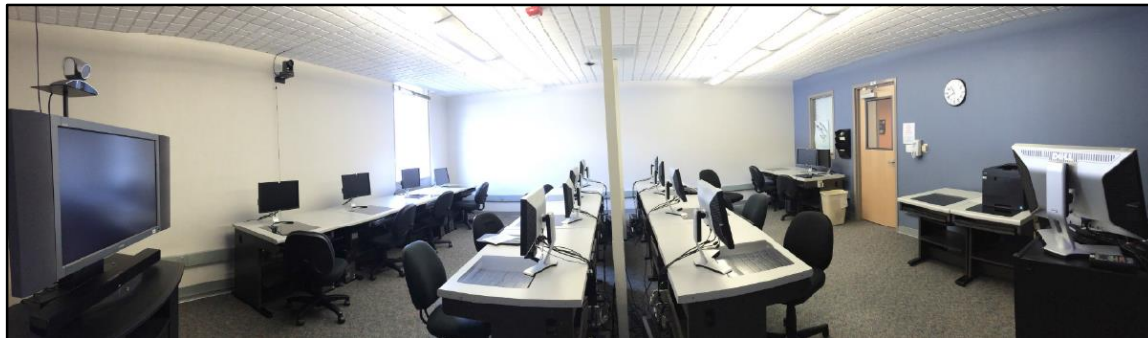
Room 153 comes equipped with a computer instruction pulpit with Office 2016, 70" TV with Polycom video capability and public Wi-Fi access.

PWSC PHOTOS AND ROOM CAPABILITIES



Room 156, Classroom

Room 156 is equipped with a computer instruction pulpit, 70" TV, Skype Video and public Wi-Fi capabilities.



Room 162, Computer Lab

Room 162 is a lab with 16 computers; all have Office 2016 installed and access to public Wi-Fi. The 70" TV has the ability to share computer content via Skype Video.



Room 168, Classroom

Room 168 is equipped with a computer instructing pulpit, projector, and public Wi-Fi access.

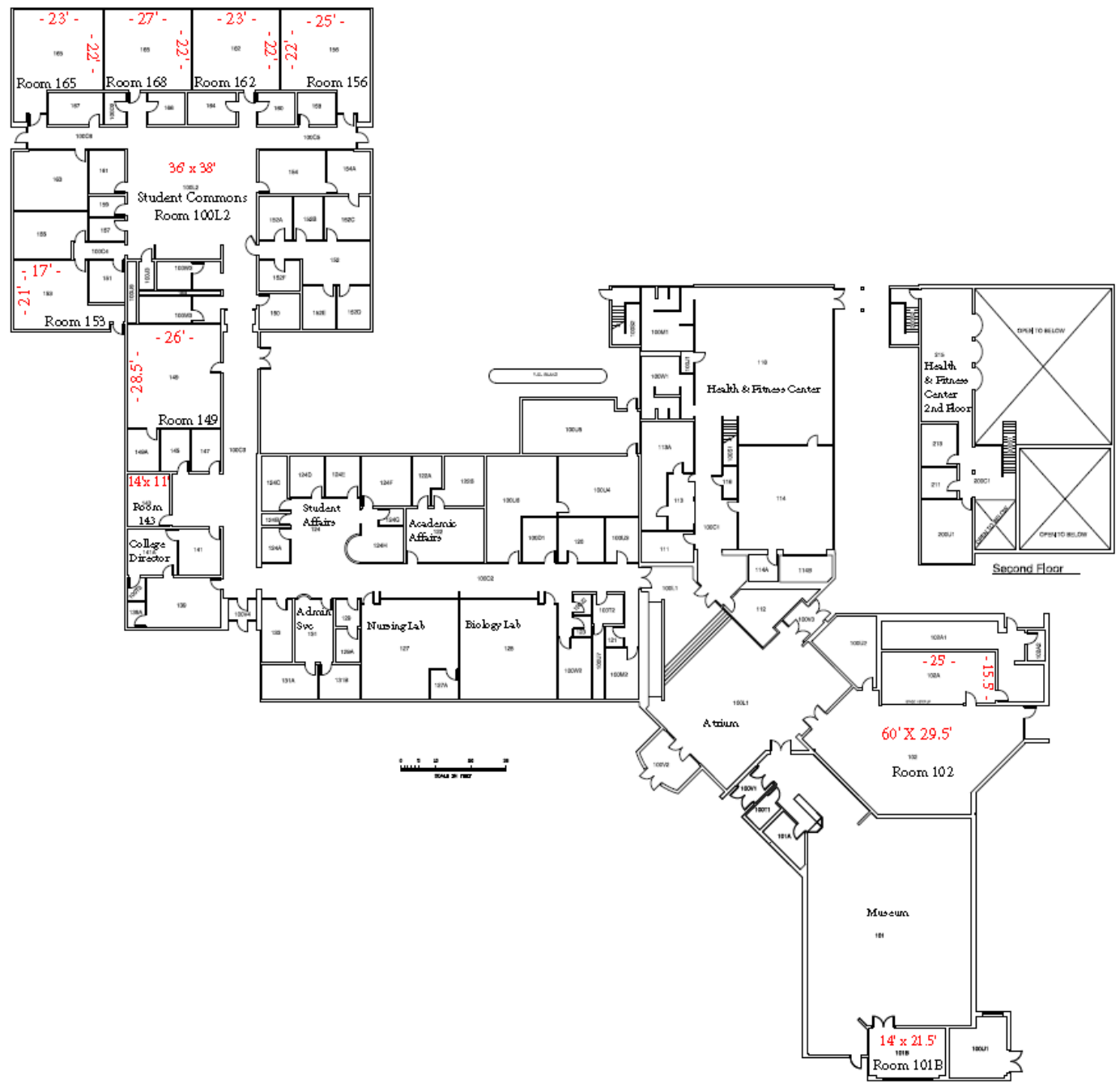
PWSC PHOTOS AND ROOM CAPABILITIES



Room 165, Studio Classroom

PWSC's Studio Classroom has several ceiling and wireless mics integrated into the system to provide excellent audio capability for distance delivery. The instructor is on a raised platform giving the students both present in the classroom and those located remotely an excellent visual experience. The instructor pulpit is equipped with zooming cameras allowing students great visual detail. The room has two 70" TVs, Office 2016, Polycom and Skype capabilities and access to public Wi-Fi. Users are also able to connect a laptop to the system.

PWSC PHOTOS AND ROOM CAPABILITIES



PWSC FACILITY USE FEE SCHEDULE

Room		Rate		Room Dimensions				Seat Arrangement/Capacity		
Number	Type	Hourly (2 Hour min)	Daily (10 Hours)	Length (ft)	Width (ft)	Square Feet	Ceiling Height	Seminar	U-Shape	Conference
100L1	Atrium	\$ 50.00	\$ 300.00	37	42	1545	12 Vaulted	N/A		
100L2	Commons	\$ 40.00	\$ 150.00	36	38	1368	13	Seating for 20 on couches/4-6 at tables		
101	Museum	\$ 50.00	\$ 300.00	60.75	49.5	3007	Vaulted	N/A		
101B	Red Room Conference	\$ 30.00	\$150.00	21.5	14	301	9.5	30	N/A	12-16
102	Suacit Hall	\$ 50.00	\$300.00	60	34	2040	9.5	65	35-40	40-50
143	Conference	\$ 30.00	\$ 150.00	14	11	154	8.5	N/A	N/A	8
149	Multi-Purpose	\$ 40.00	\$ 150.00	28.5	26	741	8.5	40	32	20-25
153	Classroom	\$ 40.00	\$ 150.00	20.75	16.7	347	8.5	8	N/A	12
155	Computer Lab (12)	\$ 50.00	\$ 225.00	15	16	240	8.5	12	N/A	N/A
156	Classroom	\$ 40.00	\$ 150.00	25	22	550	8.5	20	14	18
162	Computer Lab (13)	\$ 60.00	\$ 250.00	22	23	506	8.5	13	N/A	N/A
165	Classroom	\$ 40.00	\$ 150.00	22	23	506	8.5	12	16	N/A
168	Classroom	\$ 40.00	\$ 150.00	27	22.25	601	8.5	18	14	N/A

Parking

South Parking Lot	No Charge	76 Spaces	4 Accessible Parking Spaces
North Parking Lot	No Charge	26 Spaces	No Accessible Parking Spaces

Services and Fees

Fees or these services could be charged on the original contract or billed after the event once they all fees are assessed.

Item or Service	Description	Fee	Item or Service	Description	Fee
Coffee/Tea	100 Cup with supplies	\$ 75.00	Copy Services	Color – Per side	\$.30
	55 Cup with supplies	\$ 50.00		Black & White – Per side	\$.15
	30 Cup with supplies	\$ 30.00	Teleconference	Per Hour (one hour minimum)	\$ 12.00
Water	Daily supply of water (dispensers with cups)	\$ 10.00	IT Support	Per Hour (one hour minimum)	\$ 70.00
Food Surcharge	Catered or potluck style event	\$ 25.00	Flip Chart Easel	Daily	\$ 15.00
A suggested caterer list is available to parties interested in hosting events at the college. Catering service agreements will be between the caterer and the organization leasing the facility. PWSC will charge a Food Surcharge to all catered or potluck style events.			Dry Erase with Markers	Daily	\$ 5.00
			Lectern	Daily	\$ 5.00
			Lectern with Microphone	Daily	\$ 15.00

PWSC offers Guest and Conference Housing comprised of three apartment buildings with studio, 1-bedroom, 2-bedroom and 3-bedroom

apartment style units. Please visit the [PWSC website](#) for more information, rates and to make reservations.